

# NORMACLAMP® TORRO



The industry's gold standard for more than 50 years

- ✓ Multi-range hose clamp
- ✓ Clamping ranges in acc. with DIN 3017:  
8 – 16 mm to 140 – 160 mm
- ✓ No chromium (VI) used for coating purposes
- ✓ Larger diameters available on request

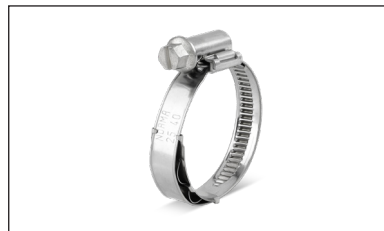
Band width (mm)	Description	Clamping range Ø DN (mm)	Part number					Packaging quantity (pcs)
			W1	W2	W3	W4	W5	
12	TORRO 16-27	16 – 27	0136 7352 021	0136 7702 021	0136 7703 021	0136 7704 021	0136 7705 021	50
12	TORRO 20-32	20 – 32	0136 7352 026	0136 7702 026	0136 7703 026	0136 7704 026	0136 7705 026	50
12	TORRO 25-40	25 – 40	0136 7352 032	0136 7702 032	0136 7703 032	0136 7704 032	0136 7705 032	50
12	TORRO 30-45	30 – 45	0136 7352 037	0136 7702 037	0136 7703 037	0136 7704 037	0136 7705 037	50
12	TORRO 35-50	35 – 50	0136 7352 043	0136 7702 043	0136 7703 043	0136 7704 043	0136 7705 043	50
12	TORRO 40-60	40 – 60	0136 7352 050	0136 7702 050	0136 7703 050	0136 7704 050	0136 7705 050	25
12	TORRO 50-70	50 – 70	0136 7352 060	0136 7702 060	0136 7703 060	0136 7704 060	0136 7705 060	25
12	TORRO 60-80	60 – 80	0136 7352 070	0136 7702 070	0136 7703 070	0136 7704 070	0136 7705 070	25
12	TORRO 70-90	70 – 90	0136 7352 080	0136 7702 080	0136 7703 080	0136 7704 080	0136 7705 080	25
12	TORRO 80-100	80 – 100	0136 7352 090	0136 7702 090	0136 7703 090	0136 7704 090	0136 7705 090	25
12	TORRO 90-110	90 – 110	0136 7352 100	0136 7702 100	0136 7703 100	0136 7704 100	0136 7705 100	25
12	TORRO 100-120	100 – 120	0136 6352 110	0136 6702 110	0136 6703 110	0136 6704 110	0136 6705 110	20
12	TORRO 110-130	110 – 130	0136 6352 120	0136 6702 120	0136 6703 120	0136 6704 120	0136 6705 120	20
12	TORRO 120-140	120 – 140	0136 6352 130	0136 6702 130	0136 6703 130	0136 6704 130	0136 6705 130	20
12	TORRO 130-150	130 – 150	0136 6352 140	0136 6702 140	0136 6703 140	0136 6704 140	0136 6705 140	20
12	TORRO 140-160	140 – 160	0136 6352 150	0136 6702 150	0136 6703 150	0136 6704 150	0136 6705 150	20

Additional diameters on request (up to 700 mm)

**Technical benefits**

- ✓ Asymmetric housing – even distribution of forces and safe assembly
- ✓ Screw support – ease of assembly due to the safe guidance of the emerging band end
- ✓ Material and clamping range stamped on the band – prevention of errors
- ✓ Smooth or stamped inside of band – optimal hose protection

**NORMACLAMP® TORRO is part of a broad portfolio. Discover more!**



TORRO WF



HD



TORRO torque cap



Hi-torque clamp



**Do you have questions or require a personal consultation?**

Feel free to contact our NORMA Team! Tel.: +49 6181-403-0

Visit our website for more information about our products: [www.norma-connects.com](http://www.norma-connects.com)