



SU-MO



SU-CL



SU-VA



SU-CU



SU-AB



SU-CA



CO-AR

**CHARACTERISTICS**

- Fast fixing systems for profiles and metal structures, without drilling or welding.
- Fast fixing by hammering the clip in models SUCU, SUVA, SUCL and by screwing in model SUMO.
- Wide range of models for all types of profiles.
- High values of mechanic resistance in suspension systems.
- Suitable for a wide range of structural profiles.
- Applications: false ceilings, threaded rod anchoring, pipes fixed by clamps, etc.








**BASE MATERIAL**



**APPLICATION EXAMPLES**



## 1. RANGE

ITEM	PHOTO	CODE	DESCRIPTION	MATERIAL	COATING
1		SUMOP09	Clamp for Steel beam	<b>A</b> Steel	<b>Z</b> ZINC Zinc-pated ≥ 5µm
		SUMOP11			
		SUMOP13			
		SUMOM06			
		SUMOM08			
		SUMOM10			
2		SUCL02	Suspension clip	<b>A</b> Steel	<b>PH</b> PHOSPHATED Phosphate ≥ 5µm
		SUCL04			
		SUCL10			
		SUCL15			
3		SUVA0602	Rod clip	<b>A</b> Steel	<b>PH</b> PHOSPHATED Phosphate ≥ 5µm
		SUVA0604			
		SUVA0610			
		SUVA0615			
		SUVA0802			
		SUVA0804			
		SUVA0810			
SUVA0815					
4		SUCU0602	Holder clip	<b>A</b> Steel	<b>PH</b> PHOSPHATED Phosphate ≥ 5µm
		SUCU0605			
		SUCU0606			
		SUCU0607			
5		SUAAB0603	Clamp Clip	<b>A</b> Steel	<b>PH</b> PHOSPHATED Phosphate ≥ 5µm
		SUAAB0607			
		SUAAB0614			
6		SUCA0602	Cable clip	<b>A</b> Steel	<b>PH</b> PHOSPHATED Phosphate ≥ 5µm
		SUCA0604			
		SUCA0607			
		SUCA0802			
		SUCA0804			
		SUCA0807			
		SUCA1002			
		SUCA1004			
		SUCA1007			
		SUCA1202			
		SUCA1204			
		SUCA1207			
		SUCA1502			
		SUCA1504			
		SUCA1507			
		SUCA1902			
SUCA1904					
SUCA1907					
SUCA2502					
SUCA2504					
SUCA2507					
7		COAR08060	Articulated Hanger	<b>A</b> Steel	<b>Z</b> ZINC Zinc-pated ≥ 5µm
		COAR10060			

## 2. INSTALLATION DATA

### 2.1 SU-MO

#### Clamp for Steel beam



Material

Coating



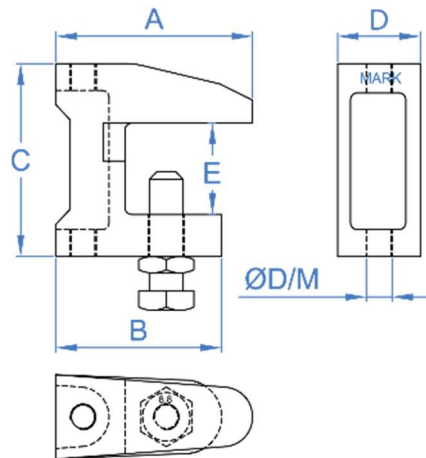
Steel

Zinc-plated  $\geq 5\mu\text{m}$

#### Installation data

Code	A	B	C	D	E	$\varnothing$ HOLE	INSTALLATION TYPE	INSTALLATION TORQUE
	[mm]	[mm]	[mm]	[mm]	[mm]	[mm]	[--]	[Nm]
SUMOP09	38	35	37	18	20	THROUGH HOLE 9	THREADED ROD + NUT OR CABLE	10
SUMOP11	44	41	42	21	20	THROUGH HOLE 11		15
SUMOP13	57	48	54	24	25	THROUGH HOLE 13		20
SUMOM06	38	35	37	18	20	THREADED M6	THREADED ROD + NUT	10
SUMOM08	38	35	37	18	20	THREADED M8		10
SUMOM10	44	41	42	21	20	THREADED M10		15
SUMOM12	57	48	54	24	25	THREADED M12		20

#### Drawing



**2.2 SU-CL**

**Suspension clip**

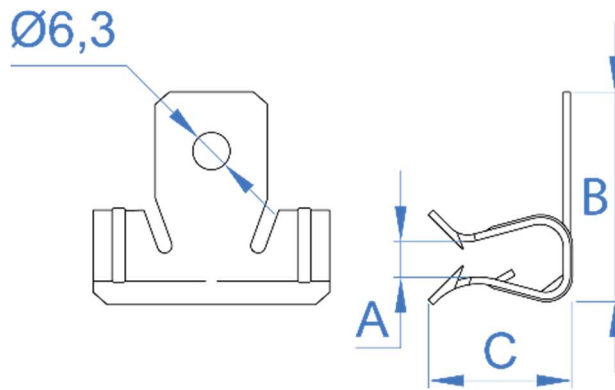


Material	Coating
Steel	Phosphate ≥ 5µm

**Installation data**

Code	A	B	C	Ø Hole
	[mm]	[mm]	[mm]	[mm]
SUCL02	1,5 ÷ 4	28	14	6,3
SUCL04	4 ÷ 10	34	23	6,3
SUCL10	10 ÷ 15	40	23	6,3
SUCL15	15 ÷ 20	40	23	6,3

**Drawing**



**2.3 SU-VA**

**Rod clip**



**Material**



Steel

**Coating**

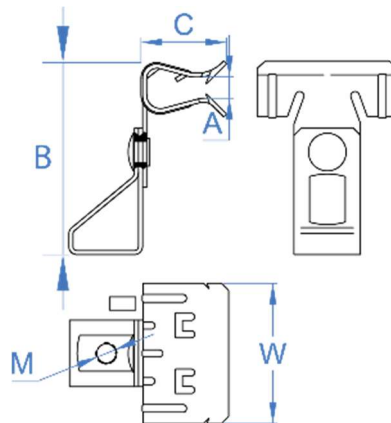


Phosphate ≥ 5µm

**Installation data**

Code	A	B	C	W	Size (M)
	[mm]	[mm]	[mm]	[mm]	[mm]
SUVA0602	1,5 ÷ 4	50	14	28	M 6
SUVA0604	4 ÷ 10	54	23	40	M 6
SUVA0610	10 ÷ 15	60	23	40	M 6
SUVA0615	15 ÷ 20	60	23	40	M 6
SUVA0802	1,5 ÷ 4	50	14	28	M 8
SUVA0804	4 ÷ 10	54	23	40	M 8
SUVA0810	10 ÷ 15	60	23	40	M 8
SUVA0815	15 ÷ 20	60	23	40	M 8

**Drawing**



**2.4 SU-CL**

**Holder clip**

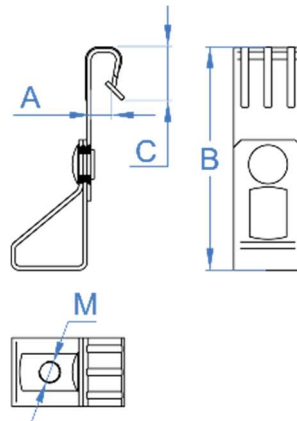


Material	Coating
	
Steel	Phosphate ≥ 5µm

**Installation data**

Code	A	B	C	Size (M)
	[mm]	[mm]	[mm]	[mm]
SUCU0602	1,5 ÷ 5	65	15	M 6
SUCU0605	5 ÷ 7	65	15	M 6
SUCU0606	3 ÷ 7	80	30	M 6
SUCU0607	7 ÷ 10	95	30	M 6

**Drawing**



**2.5 SU-AB**

**Clamp clip**



**Material**



Steel

**Coating**

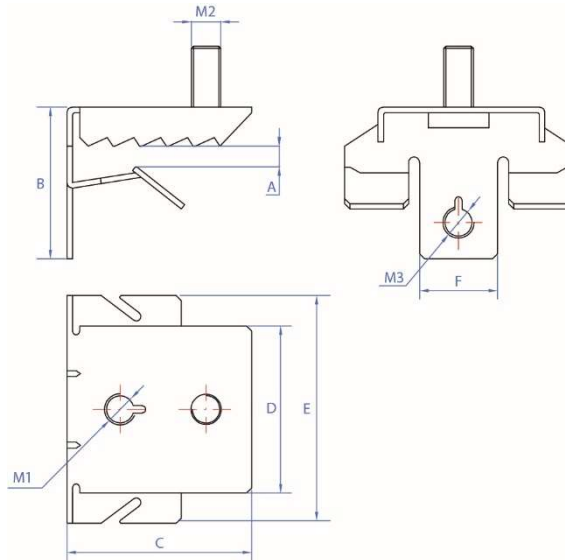


Phosphate  $\geq 5\mu\text{m}$

**Installation data**

Code	A	B	C	D	E	F	M1	M2	M3
	[mm]	[mm]	[mm]	[mm]	[mm]	[mm]	[mm]	[mm]	[mm]
SUAB0603	3 ÷ 7	30	36,5	33	45	15,4	M 6	M 6	M 6
SUAB0607	7 ÷ 13	36	36,5	33	45	15,4	M 6	M 6	M 6
SUAB0614	14 ÷ 20	43	36,5	33	45	15,4	M 6	M 6	M 6

**Drawing**



**2.6 SU-CA**

**Cable clip**



**Material**

**Coating**



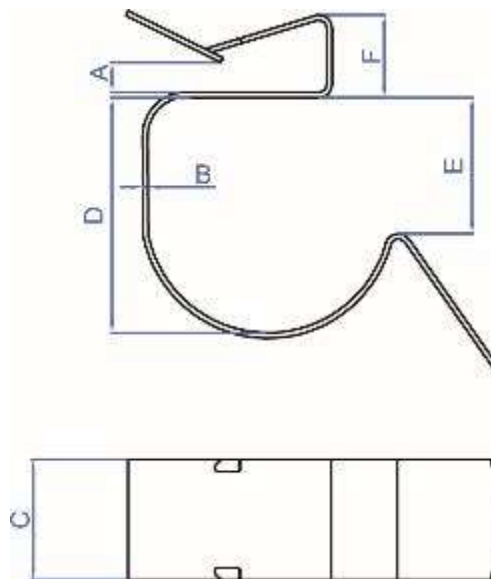
Steel

Phosphate  $\geq 5\mu\text{m}$

**Installation data**

Code	A – Thickness	Tube Diameter	B	C	D	E	F
	[mm]	[mm]					
SUCA0602	1 - 4	6 - 7	0,6	14,0	5,8	3,8	4,8
SUCA0604	4 - 7,5	6 - 7					8,0
SUCA0607	7,2 - 12	6 - 7					12,0
SUCA0802	1 - 4	8 - 9			8,0	5,8	4,8
SUCA0804	4 - 7,5	8 - 9					8,0
SUCA0807	7,2 - 12	8 - 9					12,0
SUCA1002	1 - 4	10 - 11			9,7	6,8	4,8
SUCA1004	4 - 7,5	10 - 11					8,0
SUCA1007	7,2 - 12	10 - 11					12,0
SUCA1202	1 - 4	12 - 14			11,0	7,5	4,8
SUCA1204	4 - 7,5	12 - 14					8,0
SUCA1207	7,2 - 12	12 - 14					12,0
SUCA1502	1 - 4	15 - 18			13,5	9,0	4,8
SUCA1504	4 - 7,5	15 - 18					8,0
SUCA1507	7,2 - 12	15 - 18					12,0
SUCA1902	1 - 4	19 - 24			18,5	11,5	4,8
SUCA1904	4 - 7,5	19 - 24					8,0
SUCA1907	7,2 - 12	19 - 24					12,0
SUCA2502	1 - 4	25 - 30			24,6	19,5	4,8
SUCA2504	4 - 7,5	25 - 30					8,0
SUCA2507	7,2 - 12	25 - 30	12,0				

**Plan**





**2.7 CO-AR**

**Articulated Hanger**



**Material**



Steel

**Coating**

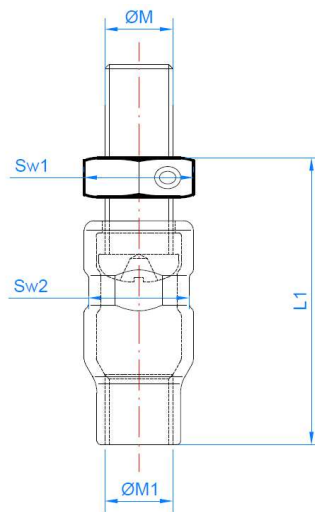


Zinc-plated  $\geq 5\mu\text{m}$

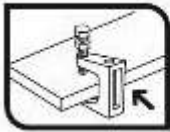
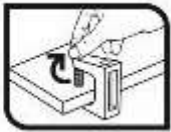
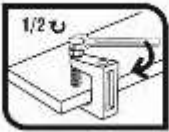
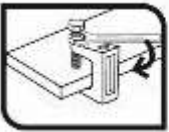
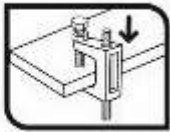
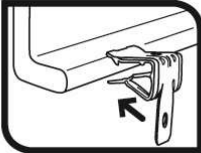
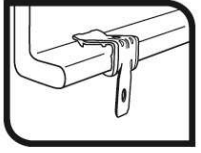
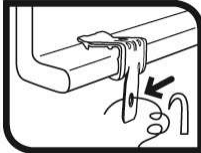
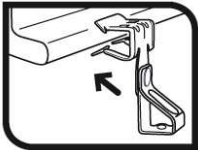
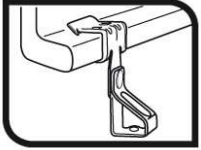
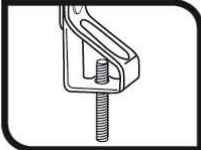
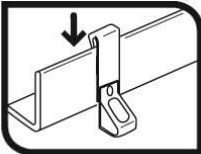
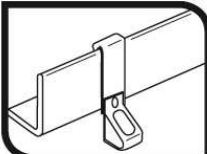
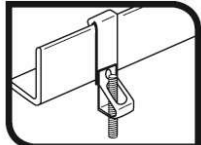
**Installation data**

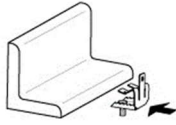
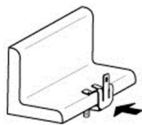
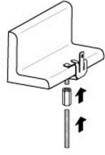


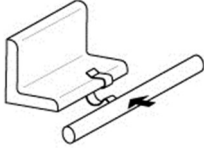
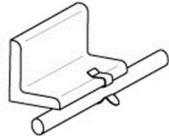
Code	$\varnothing M$ (mm)	$\varnothing M1$ (mm)	L1	Sw	Sw2
COAR08060	M8	M8	60	12,8 – 12,9	14,8 -14,9
COAR10060	M10	M10	61	16,8 – 16,9	16,8 – 16,9

**DRAWING**



### 3. INSTALLATION PROCEDURE

CODE	STEP 1	STEP 2	STEP 3	STEP 4	STEP 5
SU-MO					
	<b>Step 1:</b> Place the clip on the profile.				
	<b>Step 2:</b> Screw the clamp's bolt manually.				
	<b>Step 3:</b> With the help of a wrench tighten the bolt 1/2 turn.				
	<b>Step 4:</b> Screw the locknut manually and tighten with a wrench 1/8 turn.				
<b>Step 5:</b> Add the element to be suspended from the clamp.					
CODE	STEP 1	STEP 2	STEP 3		
SU-CL					
	<b>Step 1:</b> Place the clip on the profile.				
	<b>Step 2:</b> Hammer the clip until it is totally installed.				
<b>Step 3:</b> Add the element to be suspended from the clip.					
CODE	STEP 1	STEP 2	STEP 3		
SU-VA					
	<b>Step 1:</b> Place the clip on the profile.				
	<b>Step 2:</b> Hammer the clip until it is totally installed.				
<b>Step 3:</b> Add the element to be suspended from the clip.					
CODIGO	STEP 1	STEP 2	STEP 3		
SU-CU					
	<b>Step 1:</b> Place the clip on the profile.				
	<b>Step 2:</b> Hammer the clip until it is totally installed.				
<b>Step 3:</b> Add the element to be suspended from the clip.					

CODE	STEP 1	STEP 2	STEP 3	
SU-AB				
	<b>Step 1:</b> Place the clip on the profile.			
	<b>Step 2:</b> Hammer the clip until it is totally installed.			
	<b>Step 3:</b> Add the element to be suspended from the clip.			
CODE	STEP 1	STEP 2	STEP 3	STEP 4
SU-CA				
	<b>Step 1:</b> Place the clip on the profile.			
	<b>Step 2:</b> Hammer the clip until it is totally installed.			
	<b>Step 3:</b> Press the clip to fix the tube			
	<b>Step 4:</b> Add the element to be suspended from the clip.			

## 4. RESISTANCES

PHOTO	CODE	MAXIMUM RECOMMENDED LOAD [kg]
	SUMOP09	120
	SUMOP11	250
	SUMOP13	350
	SUMOM06	120
	SUMOM08	120
	SUMOM10	250
	SUMOM12	350
	SUCL02	70
	SUCL04	
	SUCL10	
	SUCL15	
	SUVA0602	70
	SUVA0604	
	SUVA0610	
	SUVA0615	
	SUVA0802	
	SUVA0804	
	SUVA0810	
	SUVA0815	
	SUCU0602	70
	SUCU0605	
	SUCU0606	
	SUCU0607	
	SUAB0603	40
	SUAB0607	
	SUAB0614	
	COAR08060	120
	COAR10060	150