



# TALA

Material for use:



SOLID



Product Material / Covering:

Brass

## PROFESSIONAL BOX

CODE	DIMENSIONS			EAN	PRICE
TALA532	W5/32 x 16 Ø5	300 pcs.	9600 pcs.	8423533041401	13,08
TALAM04	M4 x 16 Ø5	300 pcs.	9600 pcs.	8423533041500	13,08
TALAM05	M5 x 18 Ø6	200 pcs.	6400 pcs.	8423533041609	21,347
TALAM06	M6 x 23 Ø8	200 pcs.	4800 pcs.	8423533041708	29,437
TALAM08	M8 x 28 Ø10	100 pcs.	2400 pcs.	8423533041807	52,85
TALAM10	M10 x 33 Ø12	150 pcs.	1800 pcs.	8423533041906	82,557
TALAM12	M12 x 38 Ø15	150 pcs.	900 pcs.	8423533042002	177,64

## BLISTER



CODE	DIMENSIONS	QUANTITY	BAGS	EAN	QUANTITY	EAN	PRICE
BZTALAM06	M6 x 23 Ø8	80 pcs.	20 bags	8423533429728	4pcs.	8423533422071	3,701
BZTALAM08	M8 x 28 Ø10	80 pcs.	20 bags	8423533429735	4pcs.	8423533422088	3,701
BZTALAM10	M10 x 33 Ø12	30 pcs.	15 bags	8423533429742	2pcs.	8423533422095	3,701

## WINDOW BOX



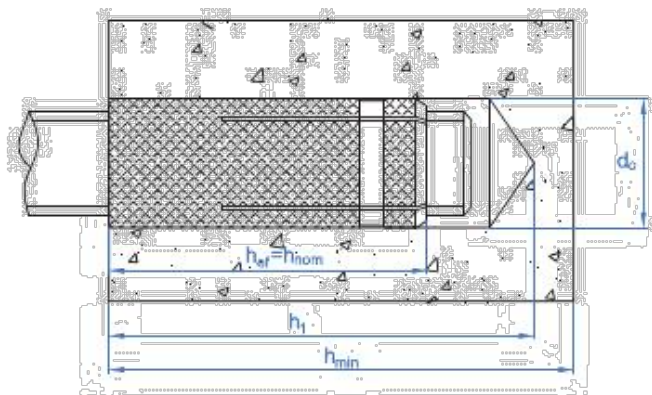
CODE	DIMENSIONS	QUANTITY	BAGS	EAN	QUANTITY	EAN	PRICE
VTALAM06	M6 x 23 Ø8	200 pcs.	8 bags	8423533053237	25pcs.	8423533754028	<b>8,948</b>
VTALAM08	M8 x 28 Ø10	120 pcs.	8 bags	8423533053244	15pcs.	8423533754035	<b>9,501</b>
VTALAM10	M10 x 33 Ø12	120 pcs.	8 bags	8423533053251	15pcs.	8423533754042	<b>14,973</b>

## FREE SERVICE



CODE	DIMENSIONS	QUANTITY	BAGS	EAN	QUANTITY	EAN	PRICE
LSTALAM06	M6 x 23 Ø8	400 pcs.	8 bags	8423533408754	50pcs.	8423533762511	<b>16,103</b>
LSTALAM08	M8 x 28 Ø10	210 pcs.	7 bags	8423533408778	30pcs.	8423533762528	<b>17,108</b>
LSTALAM10	M10 x 33 Ø12	125 pcs.	5 bags	8423533408785	25pcs.	8423533771605	<b>22,454</b>

## TECHNICAL INFORMATION



CODE	DIMENSIONS	Drill	Hole depth min.	Base material thickness	Min. anchor depth	Min. distance to edge	Min. distance from axis	Tension load non-cracked concrete
TALA532	W5/32 x 16 Ø5	5	20	25	16	24	48	60
TALAM04	M4 x 16 Ø5	5	20	25	16	24	48	60
TALAM05	M5 x 18 Ø6	6	22	30	18	27	54	70
TALAM06	M6 x 23 Ø8	8	28	35	23	35	69	100
TALAM08	M8 x 28 Ø10	10	33	40	28	42	84	150
TALAM10	M10 x 33 Ø12	12	40	45	34	51	102	210
TALAM12	M12 x 38 Ø15	15	45	50	38	57	114	320
BZTALAM06	M6 x 23 Ø8	8	28	35	23	35	69	100

BZTALAM08	M8 x 28 Ø10	10	33	40	28	42	84	150
BZTALAM10	M10 x 33 Ø12	12	40	45	34	51	102	210
VTALAM06	M6 x 23 Ø8	8	28	35	23	35	69	100
VTALAM08	M8 x 28 Ø10	10	33	40	28	42	84	150
VTALAM10	M10 x 33 Ø12	12	40	45	34	51	102	210
LSTALAM06	M6 x 23 Ø8	8	28	35	23	35	69	100
LSTALAM08	M8 x 28 Ø10	10	33	40	28	42	84	150
LSTALAM10	M10 x 33 Ø12	12	40	45	34	51	102	210

## CHARACTERISTICS

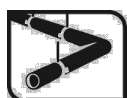


Brass



Medium loads

## RECOMMENDED FOR



Ceiling anchor



Shopping mall sign



False ceiling



Fluorescent



Signs

## TECHNICAL DOCUMENTATION



### DATA SHEET

<https://www.indexfix.com/docs/ft-rv-en.pdf>



### DATA SHEET

<https://www.indexfix.com/docs/scip-tala-en.pdf>

\*The data shown in this table are merely informative and do not constitute, in any case, contractual conditions of supply. The references contained in our catalog will be available until end of stock. Our prices do not included value added tax. This will be taxed according to current legislation for local and international transactions.