



VR-SE



MAHE



MARE



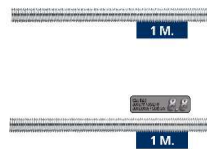
MARI



TALA



MAMH



RV – ZN / RV-ZN 8.8



RV – A2



















CHARACTERISTICS

- Versatility in sizes and components
- For suspensión mounts with nuts and washers.
- Finished in zinc plated or stainless (according to each element)

EXAMPLES



1.RANGE

| ITEM | DENOMINATION | PHOTO | MATERIAL | COATING |
|------|--------------|-------------------------------------------------------------------------------------|-------------------------------|------------------------------------------------------------------------------------------------------------------------------------|
| 1 | VR-SE |  | Steel class 4.8 ISO 898-1 |  Zinc plated $\geq 5\mu\text{m}$ ISO 4042 A2J |
| 2 | MAHE |  | Steel SAE J403 1008 |  Zinc plated $\geq 5\mu\text{m}$ ISO 4042 A2J |
| 3 | MARE |  | Steel SAE J403 1008 |  Zinc plated $\geq 5\mu\text{m}$ ISO 4042 A2J |
| 4 | MARI |  | Steel A2-70 UNE-EN ISO 3506-1 |  Steel A2-70 |
| 5 | TALA |  | Brass T-0T58 Pb UNI 5705 |  Brass |
| 6 | MAMH |  | Steel Q195 |  Zinc-plated $\geq 5\mu\text{m}$ ISO 4042 A2J |
| 7 | RV-ZN |  | Steel 4.8 ISO 898-1 |  Zinc plated $\geq 5\mu\text{m}$ ISO 4042 A2J |
| 8 | RV-ZN 8.8 |  | Steel 8.8 ISO 898-1 |  Zinc plated $\geq 5\mu\text{m}$ ISO 4042 A2J |
| 9 | RV-A2 |  | Steel A2-70 UNE-EN ISO 3506-1 |  Steel A2-70 |

2. INSTALLATION DATA

2.1 VR-SE

Small threaded bolt



Properties



Steel

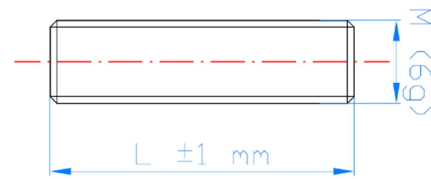


Zin Plated coating

Sizes

DRAWING

| CODE | | VRSE06020 | VRSE06030 | VRSE08020 | VRSE08030 | VRSE10030 | VRSE12030 |
|-----------------------|------|-----------|-----------|-----------|-----------|-----------|-----------|
| M: \emptyset thread | [mm] | M6 | M6 | M8 | M8 | M10 | M12 |
| L: Total length | [mm] | 20 | 30 | 20 | 30 | 30 | 35 |



2.2 MAHE

Coupling nut hexagonal*



Properties



Steel

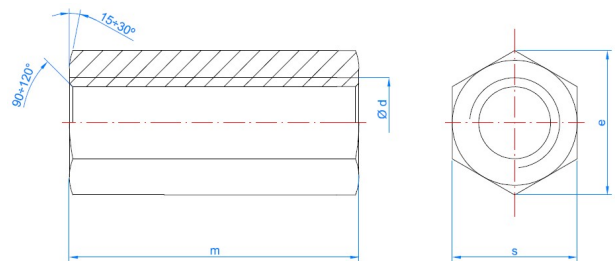


Zin Plated coating

Sizes

DRAWING

| CODE | MAE0620 | MAE0630 | MAE0830 | MAE1030 | MAE1235 | MAE1650 | MAE2060 |
|------------------------|---------|---------|---------|---------|---------|---------|---------|
| $\emptyset d$: thread | M6 | M6 | M8 | M10 | M12 | M16 | M20 |
| m: total length | 20 | 30 | 25 | 30 | 35 | 50 | 60 |
| s: installation key | 10 | 10 | 11 | 13 | 17 | 24 | 30 |
| Threaded rod | 975ZM06 | 975ZM06 | 975ZM08 | 975ZM10 | 975ZM12 | 975ZM16 | 975ZM20 |



* Resistance equivalent to a screw 6.8

2.3

MARE

Cylindrical coupling nut*



Properties



Steel

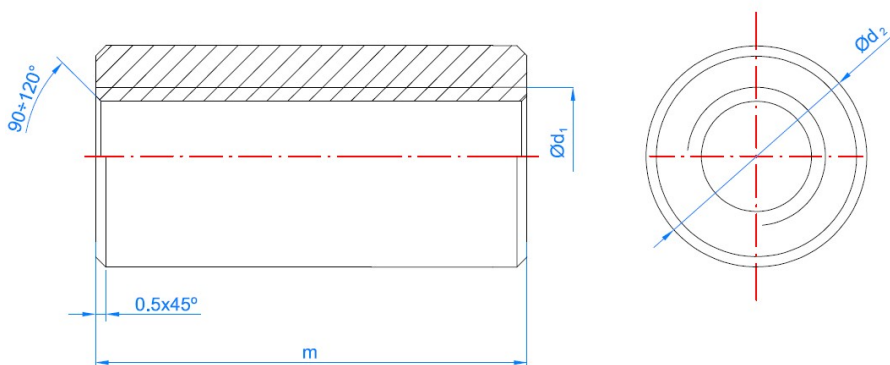


Zin Plated coating

Sizes

| CODE | | MAR5322 | MAR0420 | MAR0620 | MAR0630 | MAR0825 | MAR0830 | MAR1030 | MAR1235 | MAR1650 |
|-----------------------|------|---------|---------|---------|---------|---------|---------|---------|---------|---------|
| Ød1: thread | [mm] | 5/32W | M4 | M6 | M6 | M8 | M8 | M10 | M12 | M16 |
| m: total length | [mm] | 20 | 20 | 20 | 30 | 25 | 30 | 30 | 35 | 50 |
| Ød2: outside diameter | [mm] | 7 | 7 | 10 | 10 | 11 | 11 | 13 | 15 | 22 |
| Threaded rod | | - | 975ZM04 | 975ZM06 | 975ZM06 | 975ZM08 | 975ZM08 | 975ZM10 | 975ZM12 | 975ZM16 |

DRAWING



* Resistance equivalent to a screw 6.8

2.4 MARI

Stainless cylindrical coupling nut*



Properties

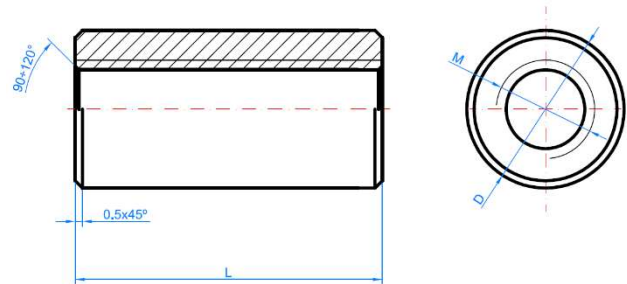


Stainless steel A2

Sizes

DRAWING

| CODE | | MARI0830 | MARI1030 |
|-----------------------|------|----------|----------|
| d∅: thread | [mm] | M8 | M10 |
| m: total length | [mm] | 30 | 30 |
| ∅d2: outside diameter | [mm] | 11 | 13 |
| Threaded rod | | 975A2M10 | 975A2M10 |



* Resistance equivalent to a screw 6.8

2.5 TALA

Brass expansion anchor



Properties

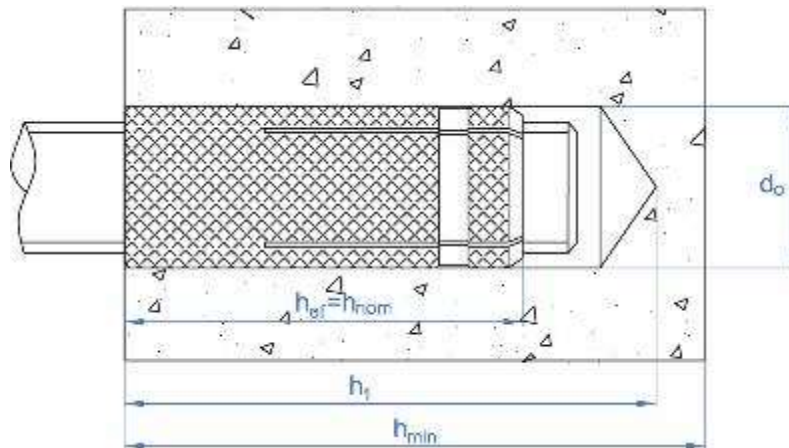


Brass

Sizes

| CODE | Size | Length | d_0 | h_1 | $h_{ef} = h_{nom}$ | h_{min} | Maximum Recommended Load |
|---------|-------|--------|-------|-------|--------------------|-----------|--------------------------|
| | [mm] | [mm] | [mm] | [mm] | [mm] | [mm] | [kg] |
| TALA532 | W5/32 | 16 | 5 | 20 | 16 | 25 | 60 |
| TALAM04 | M4 | 16 | 5 | 20 | 16 | 25 | 60 |
| TALAM05 | M5 | 18 | 6 | 22 | 18 | 30 | 70 |
| TALAM06 | M6 | 23 | 8 | 28 | 23 | 35 | 100 |
| TALAM08 | M8 | 28 | 10 | 33 | 28 | 40 | 150 |
| TALAM10 | M10 | 34 | 12 | 40 | 34 | 45 | 210 |
| TALAM12 | M12 | 38 | 15 | 45 | 38 | 50 | 320 |

Drawing



2.6 MAMH

Spacer nut M/F



Properties



Steel

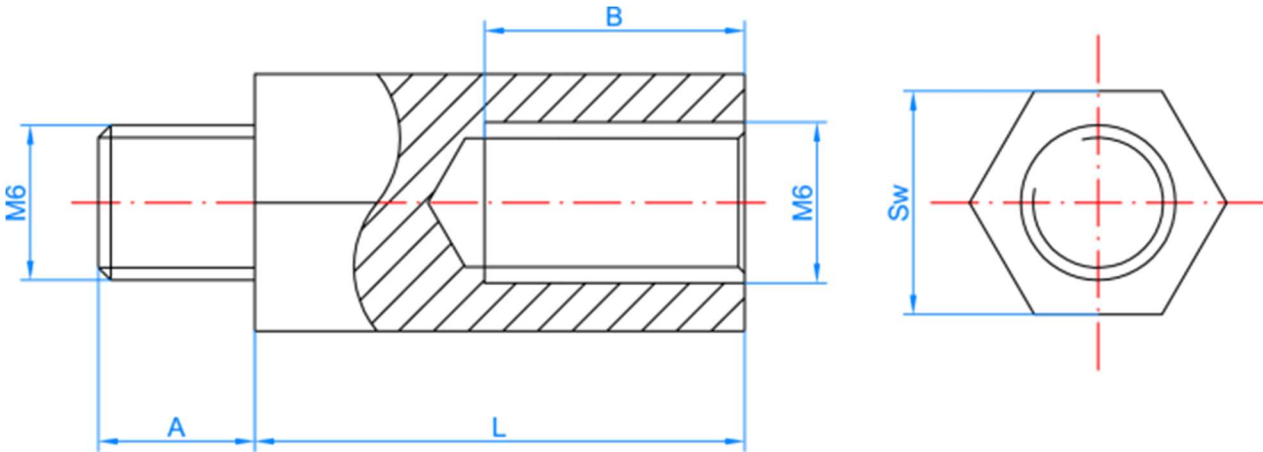


Zin Plated coating

Sizes

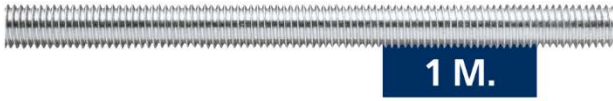
| CODE | A | B | L | SW |
|----------|----|----|----|----|
| MAMH0610 | 8 | 8 | 10 | 10 |
| MAMH0620 | 10 | 12 | 20 | 10 |
| MAMH0630 | 10 | 18 | 30 | 10 |
| MAMH0640 | 10 | 18 | 40 | 10 |
| MAMH0650 | 10 | 18 | 50 | 10 |

DRAWING



2.7 RV-ZN

Zinc plated threaded rod bar steel 4.8



Properties



Steel



Zinc plated

Sizes

| CODE | ØM | Effective section A _s [mm ²] | Characteristic tensile strength N _{k,s} [N] | Drawing |
|-----------|-----|--------------------------------------------------------|---------------------------------------------------------|---------|
| 975ZM04 | M4 | 8.78 | 3.690 | |
| 975ZM05 | M5 | 14.2 | 5.960 | |
| 975ZM06 | M6 | 20.1 | 8.440 | |
| 975ZM08 | M8 | 36.6 | 15.400 | |
| 975ZM10 | M10 | 58 | 24.400 | |
| 975ZM12 | M12 | 84.3 | 35.400 | |
| 975ZM14 | M14 | 115 | 48.300 | |
| 975ZM16 | M16 | 157 | 65.900 | |
| 975ZM18 | M18 | 192 | 80.600 | |
| 975ZM20 | M20 | 245 | 103.000 | |
| 975ZM22 | M22 | 303 | 127.000 | |
| 975ZM24 | M24 | 353 | 148.000 | |
| 975ZM27 | M27 | 459 | 193.000 | |
| 975ZM30 | M30 | 561 | 236.000 | |
| 975ZM33 | M33 | 694 | 292.000 | |
| 975ZM36 | M36 | 817 | 343.000 | |
| 975ZM2M06 | M6 | 20.1 | 8.440 | |

2.8 RV-ZN 8.8

Zinc plated threaded rod bar steel 8.8



Properties



Steel



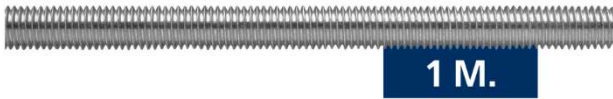
Zinc plated

Sizes

| CODE | ØM | Effective section A _s [mm ²] | Characteristic tensile strength N _{k,s} [N] | Drawing |
|----------|-----|--------------------------------------------------------|---------------------------------------------------------|---------|
| 9758ZM05 | M5 | 14.2 | 11.350 | |
| 9758ZM06 | M6 | 20.1 | 16.100 | |
| 9758ZM08 | M8 | 36.6 | 29.200 | |
| 9758ZM10 | M10 | 58 | 46.400 | |
| 9758ZM12 | M12 | 84.3 | 67.400 | |
| 9758ZM14 | M14 | 115 | 92.000 | |
| 9758ZM16 | M16 | 157 | 125.000 | |
| 9758ZM18 | M18 | 192 | 159.000 | |
| 9758ZM20 | M20 | 245 | 203.000 | |
| 9758ZM22 | M22 | 303 | 252.000 | |
| 9758ZM24 | M24 | 353 | 293.000 | |
| 9758ZM27 | M27 | 459 | 381.000 | |
| 9758ZM30 | M30 | 561 | 466.000 | |
| 9758ZM33 | M33 | 694 | 576.000 | |
| 9758ZM36 | M36 | 817 | 678.000 | |

2.9 RV-A2

Stainless steel threaded rod bar



Properties



Stainless steel A2

Sizes

| CODE | ØM | Effective section A _s [mm ²] | Characteristic tensile strength N _{k,s} [N] | Drawing |
|----------|-----|--------------------------------------------------------|---------------------------------------------------------|---------|
| 975A2M04 | M4 | 8.78 | 6.146 | |
| 975A2M05 | M5 | 14.2 | 9.940 | |
| 975A2M06 | M6 | 20.1 | 14.070 | |
| 975A2M08 | M8 | 36.6 | 25.620 | |
| 975A2M10 | M10 | 58 | 40.600 | |
| 975A2M12 | M12 | 84.3 | 59.010 | |
| 975A2M14 | M14 | 115 | 80.500 | |
| 975A2M16 | M16 | 157 | 109.900 | |
| 975A2M18 | M18 | 192 | 134.400 | |
| 975A2M20 | M20 | 245 | 171.500 | |
| 975A2M22 | M22 | 303 | 212.100 | |
| 975A2M24 | M24 | 353 | 247.100 | |
| 975A2M27 | M27 | 459 | 321.300 | |
| 975A2M30 | M30 | 561 | 392.700 | |
| 975A2M33 | M33 | 694 | 485.800 | |
| 975A2M36 | M36 | 817 | 571.900 | |