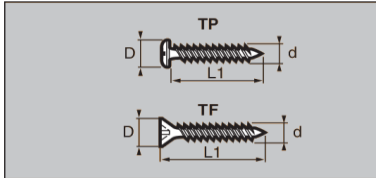
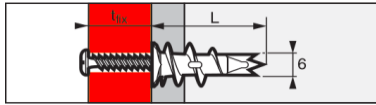


DRIVA ANCHOR

Data 16/04/14



Self drilling anchor for plasterboard & aerated concrete



Technical data

Type	Code	Max thick of part to be fixed mm t _{fix}	Ø Screw mm d	Ø Collar mm -	Ø Screw head mm D	Screw length mm L1	Total anchor length mm L	Box pz -	Carton pz -
DRIVA TP 12	8704226	12	4,5	13	9,2	35	31	100	3.200
DRIVA TP 27	8704228	27	4,5	13	8,8	50	31	100	3.200
DRIVA TF 5	8704227	5	4,5	13	8,2	25	31	100	3.200

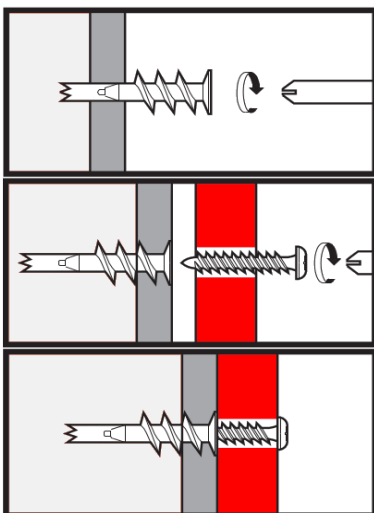
APPLICATION

- Fixing to plasterboard and aerated concrete;
- Bathroom accessories, wall heaters;
- Electrical switch boxes, trunking, conduit;
- Curtain track.

MATERIAL

- Anchor body-zamak 3
- Special screw supplied, head type PZ2

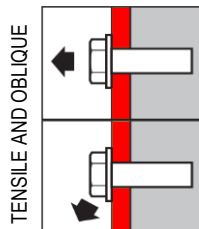
INSTALLATION



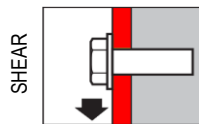
NOTA Predrilling with HSS drill bit is required in:

- laminated plasterboard or gypsum block: Ø 10 mm
- aerated concrete: Ø 6 mm

Recommended and ultimate loads (kN)



Type	Aerated concrete		Plasterboard (13 mm)	
	N _{rec}	N _{u,m}	N _{rec}	N _{u,m}
DRIVA TP 12				
DRIVA TP 27	0,06	0,30	0,06	0,30
DRIVA TF 5				



Type	Aerated concrete		Plasterboard (13 mm)	
	V _{rec}	V _{u,m}	V _{rec}	V _{u,m}
DRIVA TP 12				
DRIVA TP 27	0,18	0,90	0,18	0,90
DRIVA TF 5				

NOTE The tests are performed on normal availability base materials. Check and adopt other appropriate safety factors.